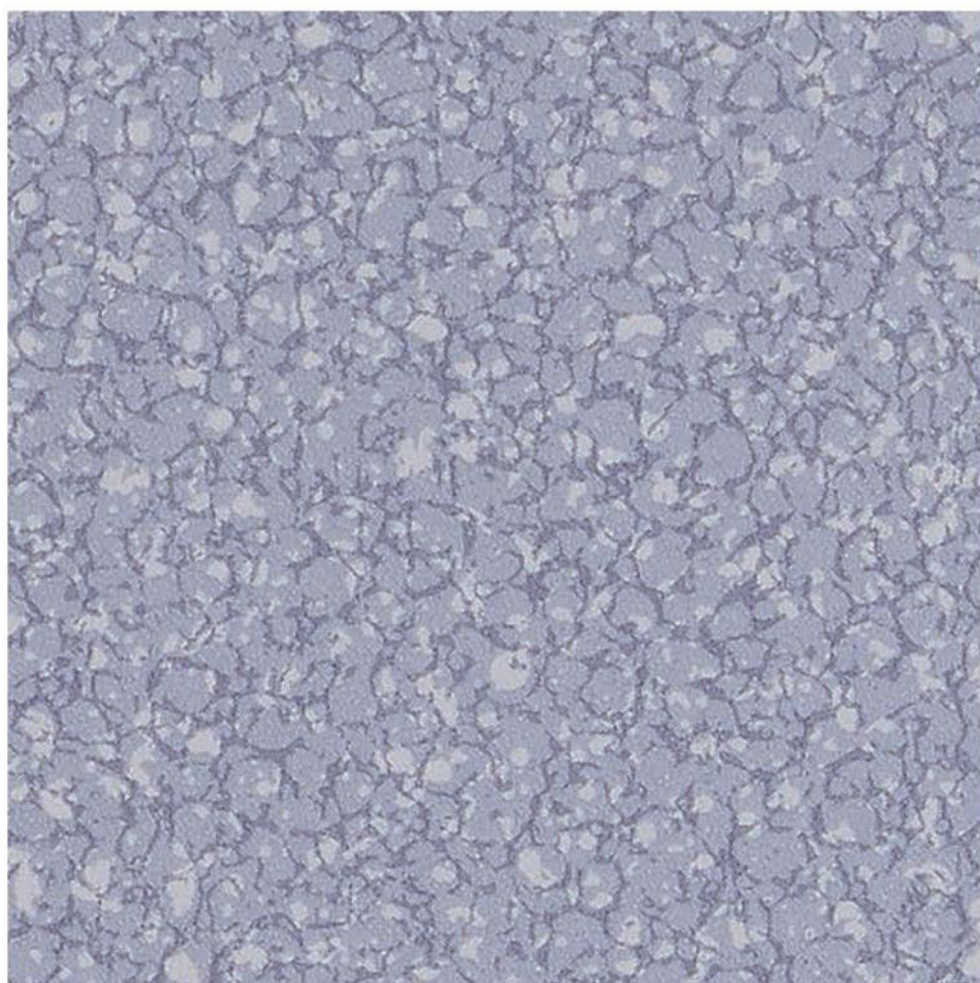


TARALAY EMOTION™ 柏莱灵动™

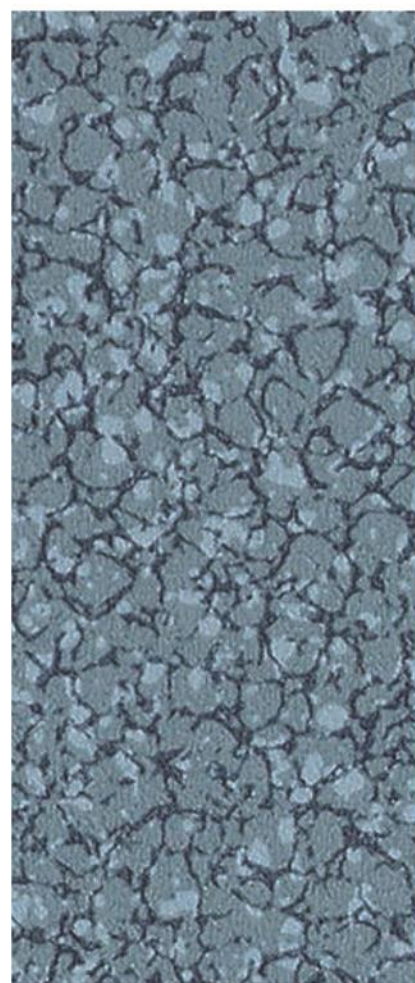
gerflor.com
gerflor.cn



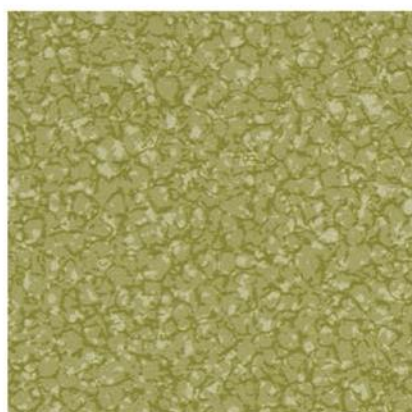
Gerflor[®]
theflooringgroup



0601 Azur

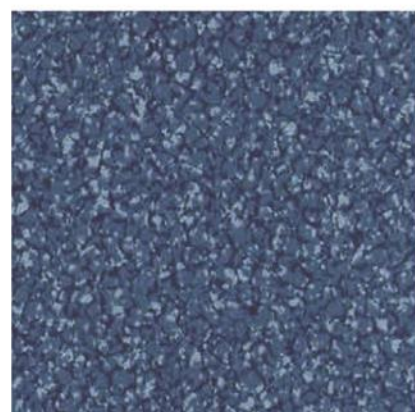


0612 Sapphire

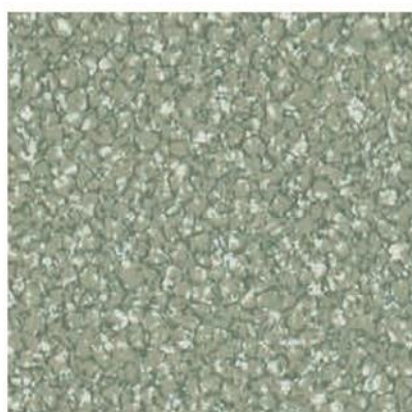


0615 Verdure

THE
FRENCH
TOUCH



0618 Blove



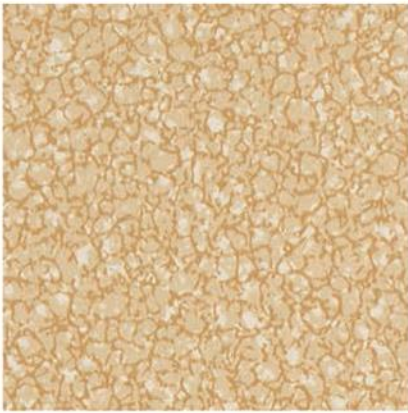
0620 Grass



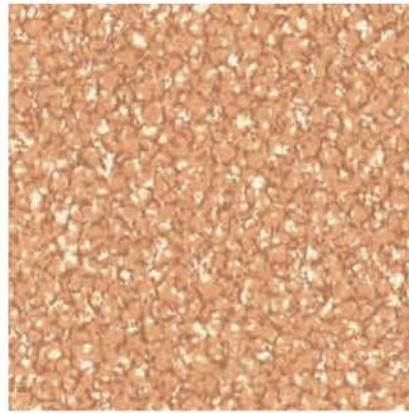
0607 Fumee



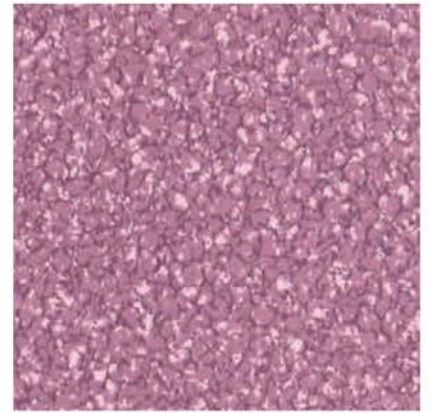
0606 Gris



0602 Sahara



0616 Beige



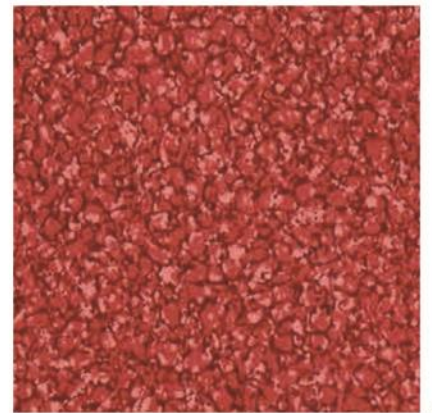
0619 Purple



0603 Sand



0614 Inulin



0617 Redish



0608 Pastel



0611 Pearl

COUTURE 特迪

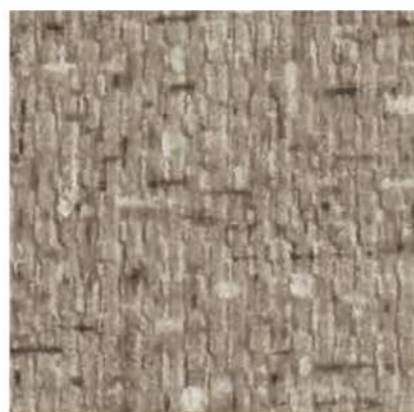


0715 Corn

THE
FRENCH
TOUCH



0710 Beige



0711 Capuccino



0713 Sky



0714 Iris



0708 Dark



0701 Ivory



0709 Cotton



0712 Smoke



0707 Natural

PANAME 灰岩

THE
FRENCH
TOUCH



0808 Ocre



0802 Light Grey



0807 Yellow



0805 Brown



0801 Sable



0809 Clay



0810 Jade



0804 Slate



0811 Calaité



0806 Anthracite

WOOD 木纹



FONTENAY - 0506 Exotic



FONTENAY - 0505 Brown



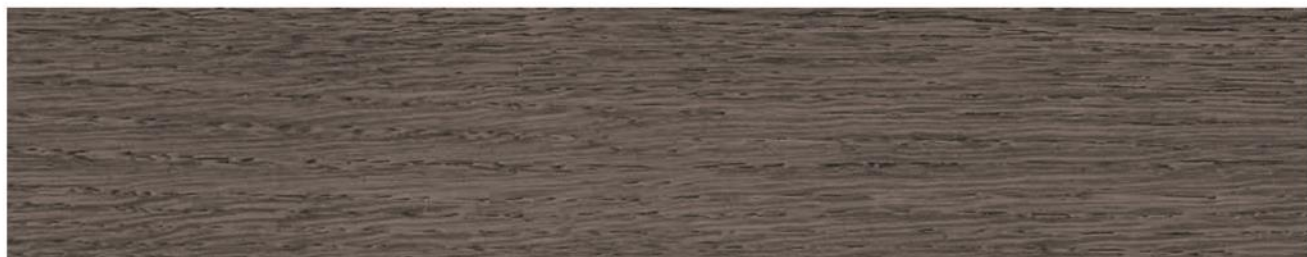
AMBOISE - 0902 Rustic



AMBOISE - 0903 Beige



AMBOISE - 0901 Black



ARCY - 1002 Taupe

WOOD 木纹



AMBOISE - 0904 White



FONTENAY - 0504 Cream



CHINON - 0402 Light



CHINON - 0403 Honey



FONTENAY - 0503 Honey



ARCY - 1003 Chamois









NE

WOOD 木纹 AMBOISE



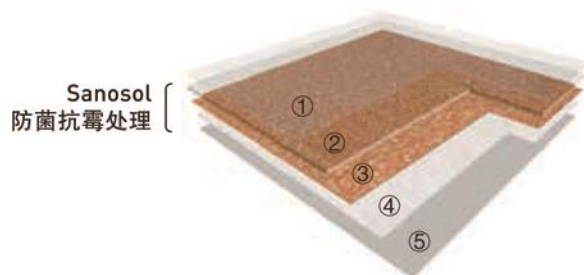




WOOD 木纹 CHINON

	34-43	Protocolsol®	Sanosol	100% recyclable
--	-------	--------------	---------	-----------------

BORGO 博格/ COUTURE 特迪/ PANAME 灰岩/ WOOD 木纹

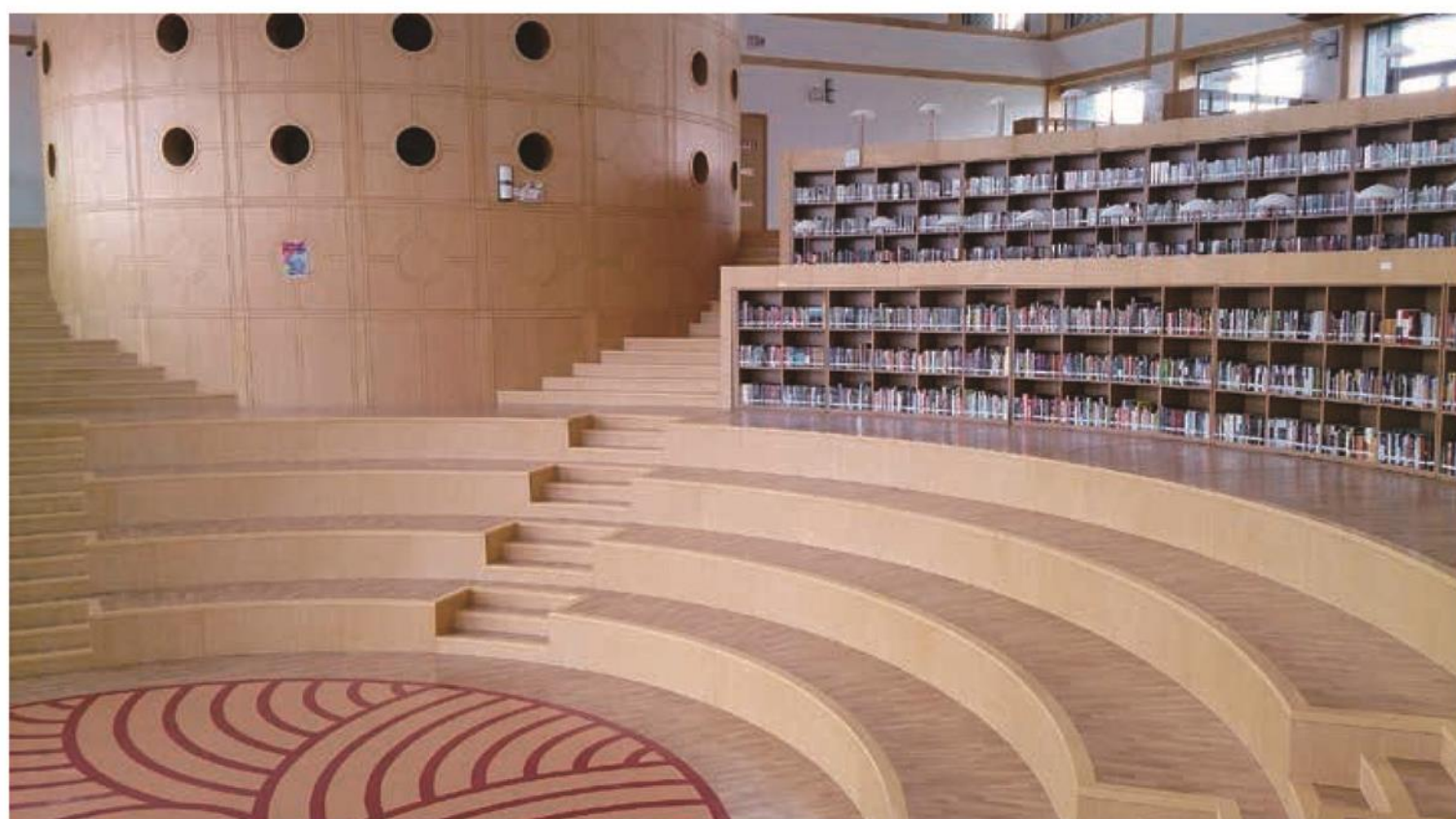


- ① Protocolsol® special maintenance treatment
Protocolsol® 特殊维护处理
- ② Transparent wear layer 透明耐磨层
- ③ Printed design 印刷设计层
- ④ Fiber glass reinforced layer 玻璃纤维加强层
- ⑤ Compact back layer 致密背层

- Protocolsol® special maintenance treatment with excellent resistance to scratching, scuffing & easy cleaning.
Protocolsol® 特殊维护处理，卓越的抗刮痕性及耐鞋底刮擦性能，极易清洁保养。
- Transparent wear layer with printed designing, highest durability.
透明耐磨层，印刷花纹设计，经久耐用。
- Compact backing with fiber glass reinforced layer. High resistance to static and dynamic indentation under rolling loads, and excellent dimensional stability.
玻璃纤维加强层及致密背层，优异的耐压性能，可抵抗静、动滚轮载荷，尺寸稳定不易变形。

- Sanosol treated throughout the thickness to prevent bacterial and fungicidal contamination.
经过Sanosol对地板进行全厚度处理，以防止细菌和霉菌污染。
- No DOP, no heavy-metal, no benzene, no formaldehyde & 100% compliant with REACH, friendly to health and environment.
无DOP、无重金属、无苯、无甲醛，100%符合欧盟REACH法规，健康环保。
- Recommended for high traffic area in education, office, retail, hospital and institutional buildings.
适用于人流量较大的教育、办公、零售、医疗和公共建筑等领域。

Compact sheet, without foam backing 致密卷材，无泡沫背层



TARALAY EMOTION

TARALAY EMOTION is a multilayered compact vinyl floorcovering, available in 2 m wide sheet, with a group T wear rating. The product comprises a printed design that is protected by a transparent wear layer (0.70 mm thick) and a compact backing with fiber glass reinforced layer, which resists against static or dynamic indentation under rolling loads and provides good dimensional stability.

TARALAY EMOTION is protected by a UV cured surface treatment **Protecsol®** which facilitates ease of maintenance and eliminates permanently the need of an acrylic emulsion (metallisation).

It does not contain any heavy metals or CMR 1&2 and it is 100% compliant with REACH. The product emission rate of volatile organic compounds is < 100 µg/m³ (TVOC after 28 days – ISO 16000 -6). It is 100% recyclable.

TARALAY EMOTION

BORGO / COUTURE / PANAME / WOOD

DESCRIPTION

Total thickness	ISO 24346 (EN 428)	mm	2.0	2.6
Thickness of wearlayer	ISO 24340 (EN 429)	mm	0.7	0.7
Weight	ISO 23997 (EN 430)	g/m ²	2800	3800
Width of sheet	ISO 24341 (EN 426)	cm	200	200
Length of sheet	ISO 24341 (EN 426)	lm	20	15

CLASSIFICATION

Norm / Product specification	-	-	ISO 10582 (EN 649)	ISO 10582 (EN 649)
European classification	ISO 10874 (EN 685)	class	34-43	34-43
Fire rating	EN 13501-1	class	Bfl-s1	Bfl-s1
Static electrical propensity	EN 1815	kV	< 2	< 2
Slip resistance wet	DIN 51 130	class	R9	R9

PERFORMANCES

Wear resistance	EN 660.2	mm ³	≤ 2	≤ 2
Wear group	EN 649	group	T	T
Type binder content	ISO 10582	type	I	I
Dimensional stability	ISO 23999 (EN 434)	%	≤ 0.4	≤ 0.4
Residual indentation	ISO 24343-1 (EN 433)	mm	≤ 0.1	≤ 0.1
Castor chair test	ISO 4918 (EN 425)	-	OK	OK
Thermal conductivity	ISO 10456 (EN 12524)	W/(m.K)	0.25	0.25
Colour fastness	ISO 105 - B02	degree	≥ 6	≥ 6
Chemical product resistance ⁽¹⁾	ISO 26987 (EN 423)	-	OK	OK
Anti-bacterial and fungicidal treatment	-	-	Sanosol	Sanosol
Surface treatment	-	-	Protecsol®	Protecsol®
Anti-bacterial activity [E. coli - S. aureus - MRSA] ⁽²⁾	ISO 22196	-	> 99% inhibits growth	> 99% inhibits growth

ENVIRONMENT / INDOOR AIR QUALITY

TVOC after 28 days	ISO 16000-6	µg/m ³	<100	<100
Certification	-	-	Floorscore®	Floorscore®

CE MARKING



EN 14041



(1) Regarding the resistance to chemicals, please download the corresponding leaflet from our web-site.

(2) The implementation of an effective cleaning method is the best defence against infection.

INSTALLATION: Installation should be carried out in accordance with local standards. Subfloor should be smooth, hard, clean and dry prior to laying. Where applicable the subfloor must incorporate an effective Damp Proof Membrane. The material must be allowed to acclimatize 24 hours before installation in a room temperature of between 18-24°C. All seams must be hot welded using Gerflor® matching welding rod.

MAINTENANCE: No acrylic emulsion (wax) is needed for life. Maintenance should be carried out regularly to retain in the appearance and durability of the floor. The floorcovering should be maintained with regular sweeping and damp mopping using a neutral cleanser. More intense cleaning should be carried out using a fine spray cleaning pad under a floor machine, or for larger areas combined machine cleaning.

⚠ Rubber leaves indelible stains on vinyl flooring: do not use mats with rubber backing and replace tubular furniture feet with those made of PVC or polyamide.